

How to add dahua evs to ivss

【1】Product Model (Version)

Dahua EVS, IVSS

【2】Description of the problem

Want to add dahua evs share folder to dahua ivss

【3】Problem Processing (Root Cause)

Dahua evs share folder want to add in dahua IVSS.first we have to connect both the evs and ivss in same network.and in evs first we have to add storage device(hard disk) and create a share folder.

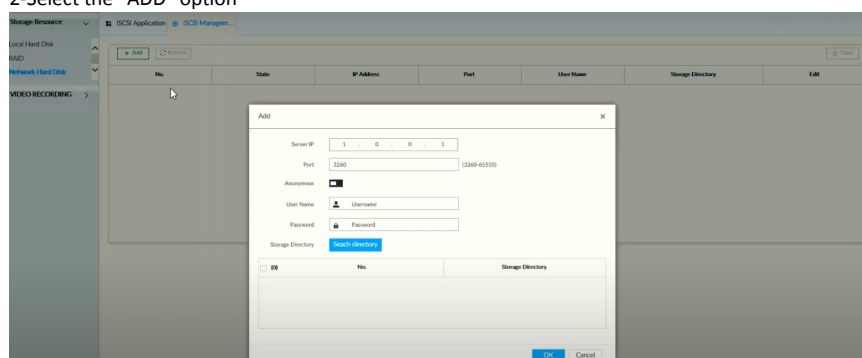
After that open the ivss ip and go to the storage option and recording option.

The other step by step procedure explained bellow.

【4】Solution

1-go to iSCSI management

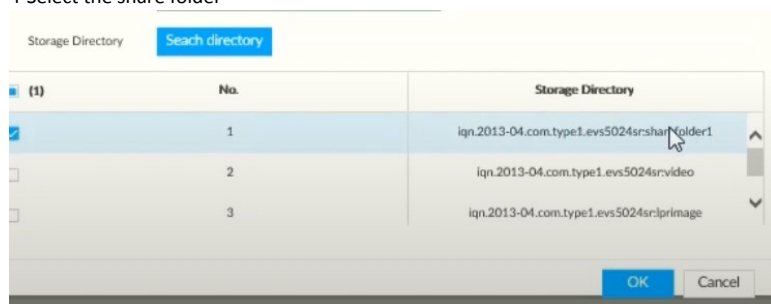
2-Select the "ADD" option



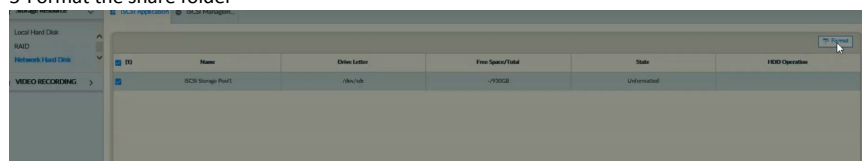
3-Add the ip of the evs device

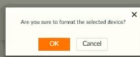


4-Select the share folder



5-Format the share folder





6-Now the share folder is added in IVSS and the recording will start.

End....