

IPC Hardware Instruction

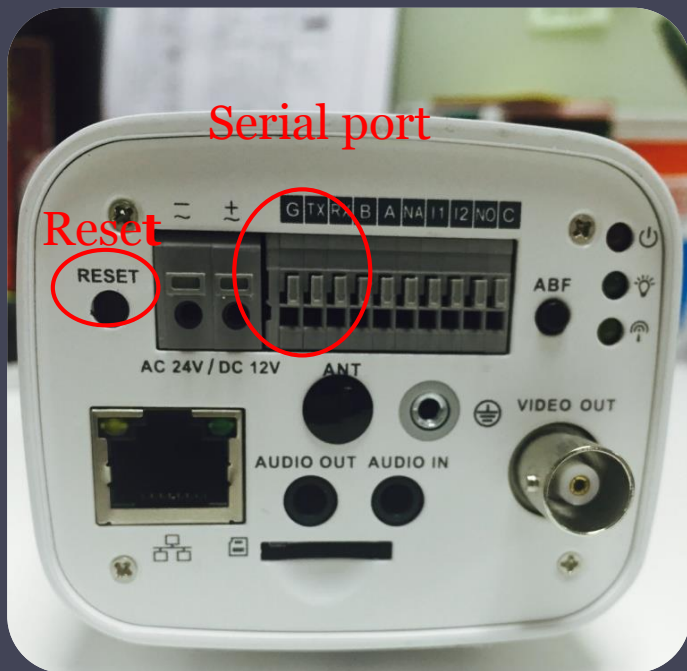


Overseas Sales Department

IPC 8 Series



HF81230/81200/8281/8232E



Reset: Press the reset button for 5 seconds.

Serial port connection: Please use connector(1.2.17.12.0011) and weld it on the package of the serial port.

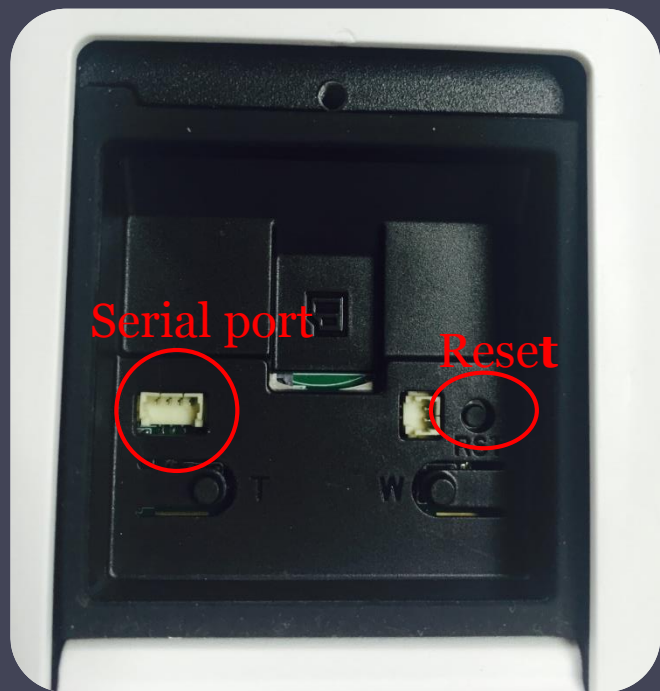
HF8331F/8835F/8232F/8231F
/8241F/8242F



Reset: Press the reset button for 5 seconds.

Serial port connection: Please use connector(1.2.17.12.0011) and weld it on the package of the serial port.

HFW81230/81200/8630/8331/ 8281/8231/8232-Z/8241E



Reset: Press the reset button for 5 seconds.

Serial port connection: Please use connector(1.2.17.12.0011) and weld it on the package of the serial port.

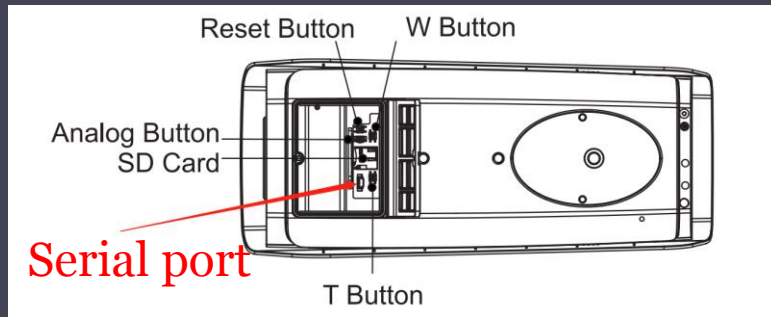
HDBW81230/81200/8630/8331/8281 /8231/8241/8242/8232E-Z



Reset: Press the reset button for 5 seconds.

Serial port connection: Please use connector(1.2.17.12.0011) and weld it on the package of the serial port.

HFW8242E-FD/FR-IRA-LED



Reset: Press the reset button for 5 seconds.

Serial port connection: Please use connector(1.2.17.12.0011) and weld it on the package of the serial port.

HDW8341X-3D

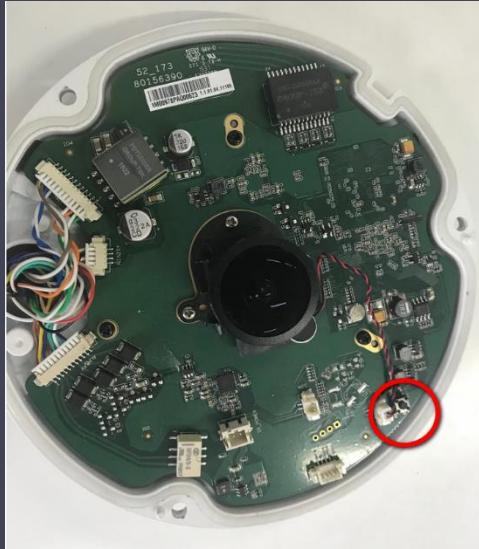


Reset: Press the reset button for 5 seconds.

Serial port connection: Please use connector(1.2.17.12.0011) and weld it on the package of the serial port.



EBW8630/81230



Reset: Press the reset button for 5 seconds.

Serial port connection: Please use connector(1.2.17.12.0011) and weld it on the package of the serial port.

PFW8601/8800



Reset: Press the reset button for 5 seconds.

Serial port connection: Please use connector(1.2.17.12.0011) and weld it on the package of the serial port.

HUM8101



Reset: Press the reset button for 5 seconds.

Serial port connection: Please use connector(1.2.17.12.0011) and weld it on the package of the serial port.

IPC 5 Series



HFW5231/5431/5631/5831E-ZE(Z5E)



Reset: Press the reset button for 5 seconds.

Serial port connection: Please use connector(1.2.17.12.0011) and weld it on the package of the serial port.

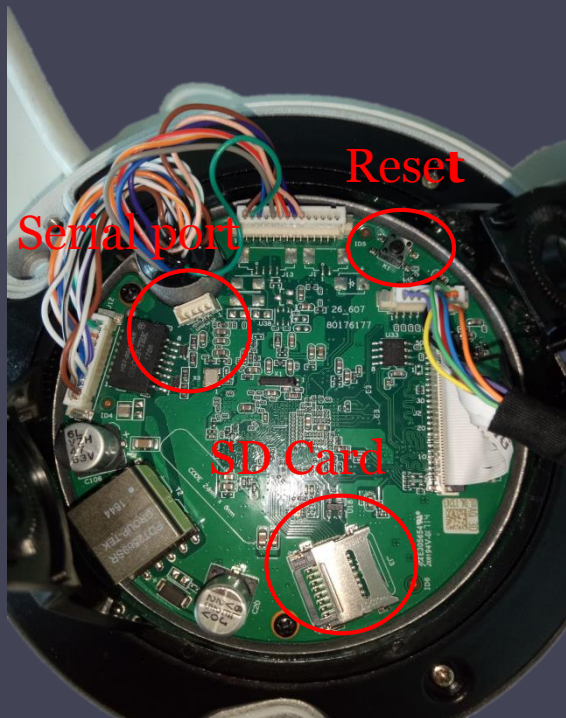
HF5231/5431E-E



Reset: Press the reset button for 5 seconds.

Serial port connection: Please use connector(1.2.17.12.0011) and weld it on the package of the serial port.

HDBW5231/5431/5631/5831R-ZE



Reset: Press the reset button for 5 seconds.

Serial port connection: Please use connector(1.2.17.12.0011) and weld it on the package of the serial port.

HDBW5231/5431/5631/5831E- ZE(Z5E)



Reset: Press the reset button for 5 seconds.

Serial port connection: Please use connector(1.2.17.12.0011) and weld it on the package of the serial port.

HDW5231/5431/5631/5831R-ZE



Reset: Press the reset button for 5 seconds.

Serial port connection: Please use connector(1.2.17.12.0011) and weld it on the package of the serial port.

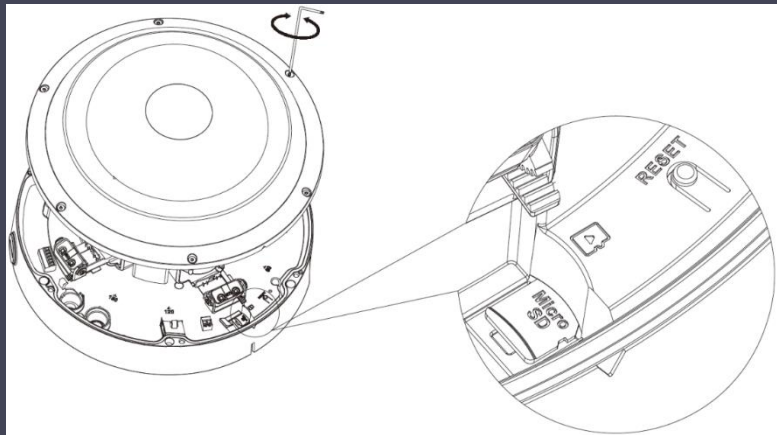
EB5400/5531



Reset: Press the reset button for 5 seconds.

Serial port connection: Please use connector(1.2.17.12.0011) and weld it on the package of the serial port.

PDBW5831-B360



Reset: Press the reset button for 5 seconds.

Serial port connection: Please use connector(1.2.17.12.0011) and weld it on the package of the serial port.

IPC 4 Series



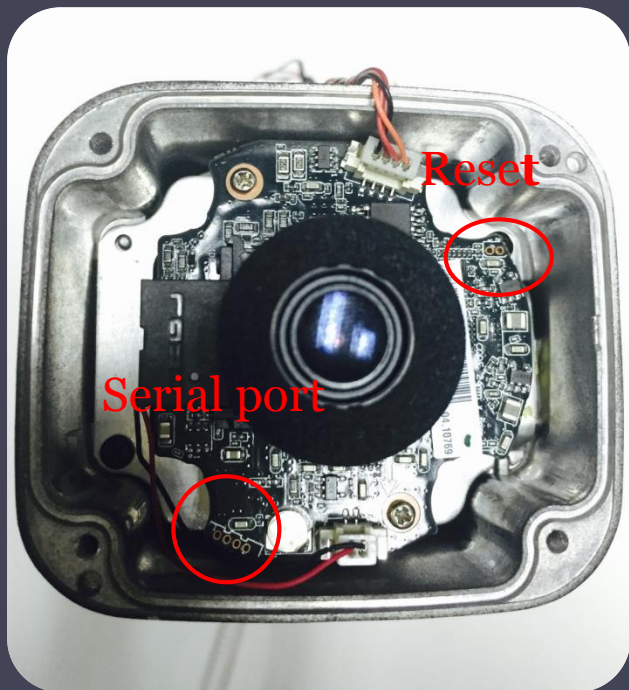
HFW4421/4221/4220/4120S



Reset: Make short circuit between two small holes on the PCB for 5 seconds.

Serial port connection: Please use connector(1.2.17.12.0011) and weld it on the package of the serial port.

HFW4421/4221/4220/4120E



Reset: Make short circuit between two small holes on the PCB for 5 seconds.

Serial port connection: Please use connector(1.2.17.12.0011) and weld it on the package of the serial port.

HF4830/4431/4231E-S



Reset: Press the button for 5 seconds.

Serial port connection: Please use connector(1.2.17.12.0011) and weld it on the package of the serial port.

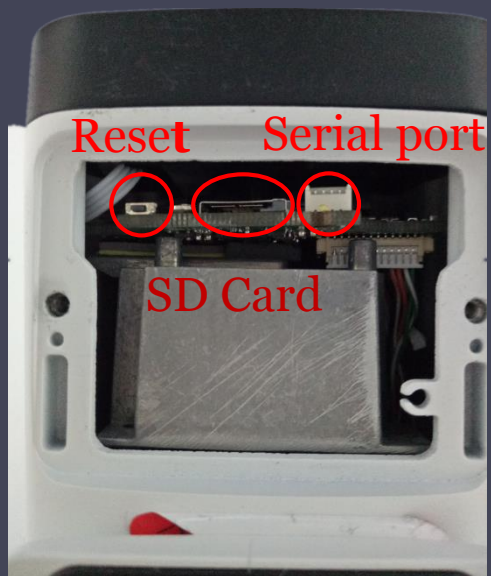
HF4231/4431/4631/4831E-SE



Reset: Press the reset button for 5 seconds.

Serial port connection: Please use connector(1.2.17.12.0011) and weld it on the package of the serial port.

HFW4231/4431/4631/4831T-ASE



Reset: Press the reset button for 5 seconds.

Serial port connection: Please use connector(1.2.17.12.0011) and weld it on the package of the serial port.

HDBW4421/4221/4220/4120/4 830/4431/4231E-AS



Reset: Press the reset button for 5 seconds.

Serial port connection: Please use connector(1.2.17.12.0011) and weld it on the package of the serial port.

HDBW4231/4431/4631/4831E-ASE



Reset: Press the reset button for 5 seconds.

Serial port connection: Please use connector(1.2.17.12.0011) and weld it on the package of the serial port.

HDBW4421/4221/4220/4120F



Reset: Press the reset button for 5 seconds.

Serial port connection: Please use connector(1.2.17.12.0011) and weld it on the package of the serial port.

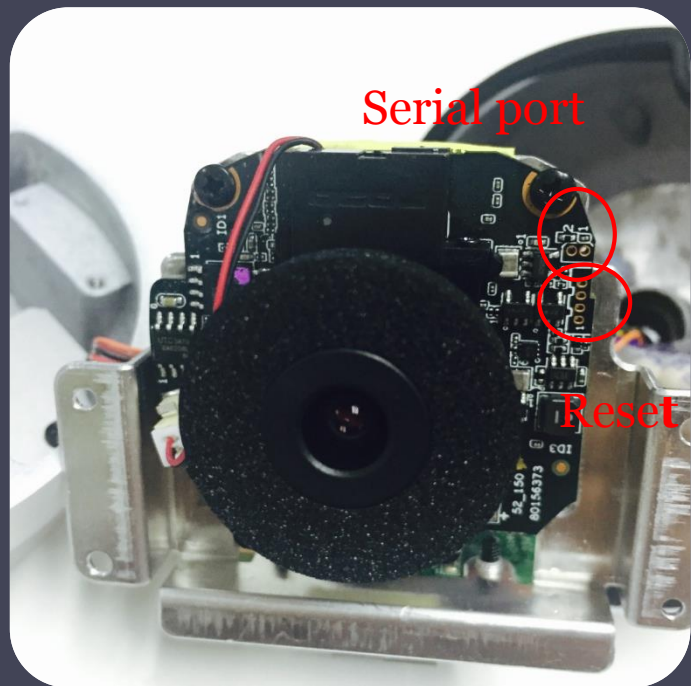
HDBW4431/4231F-AS



Reset: Press the reset button for 5 seconds.

Serial port connection: Please use connector(1.2.17.12.0011) and weld it on the package of the serial port.

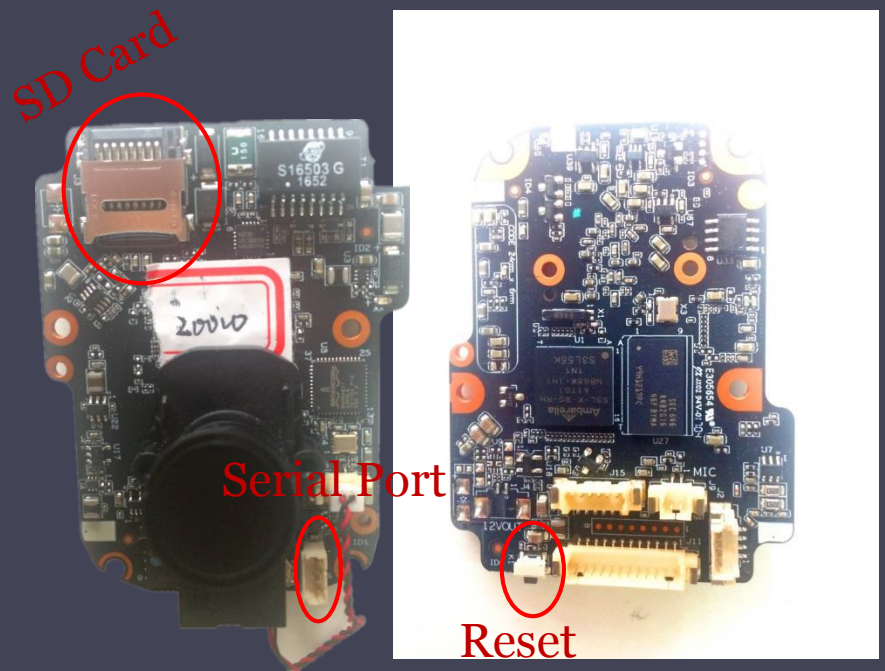
HDW4421/4221/4220/4120E



Reset: Make short circuit between two small holes on the PCB for 5 seconds.

Serial port connection: Please use connector(1.2.17.12.0011) and weld it on the package of the serial port.

HDW4830/4431/4231EM-AS



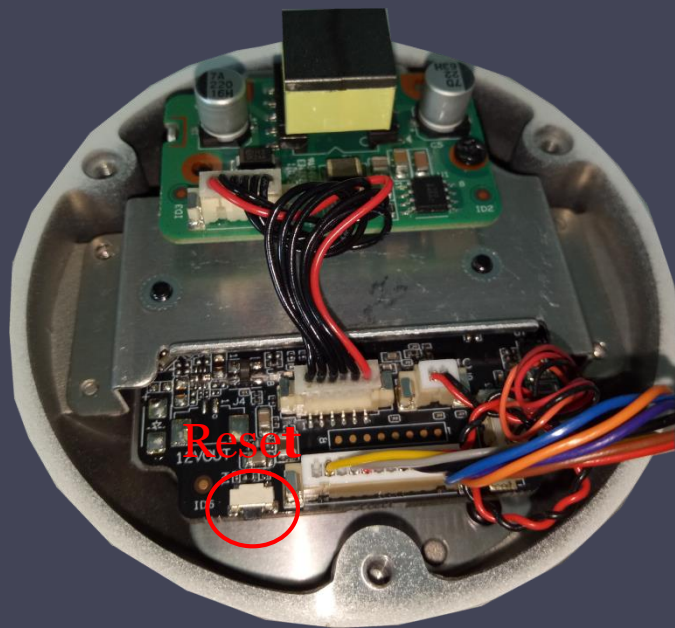
正面

反面

Reset: Press the reset button for 5 seconds.

Serial port connection: Please use connector(1.2.17.12.0011) and weld it on the package of the serial port.

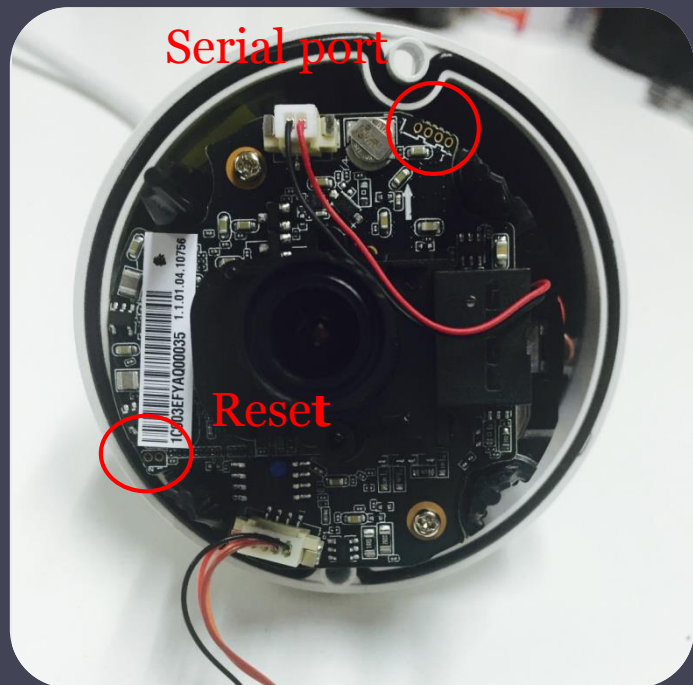
HDW4231/4431/4631/4831EM-ASE



Reset: Press the reset button for 5 seconds.

Serial port connection: Please use connector(1.2.17.12.0011) and weld it on the package of the serial port.

HDW4431/4231/4421/4221/4220/ 4120M



Reset: Make short circuit between two small holes on the PCB for 5 seconds.

Serial port connection: Please use connector(1.2.17.12.0011) and weld it on the package of the serial port.

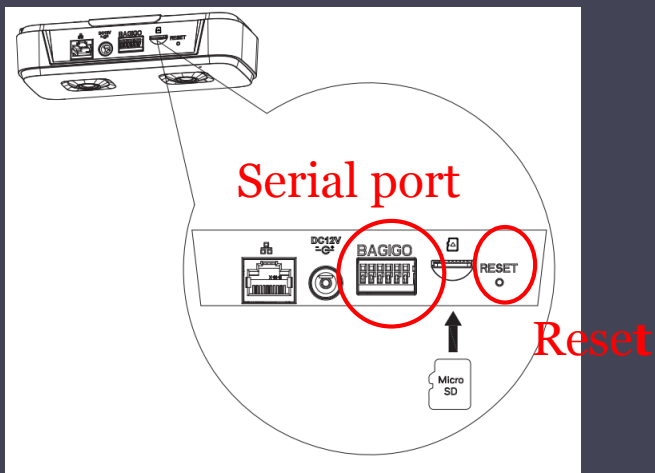
HDB4231/4431G-AS



Reset: Press the reset button for 5 seconds.

Serial port connection: Please use connector(1.2.17.12.0011) and weld it on the package of the serial port.

HD4140X-3D



Reset: Press the reset button for 5 seconds.

Serial port connection: Please use connector(1.2.17.12.0011) and weld it on the package of the serial port.

IPC 3 Series



HF3241F



Reset: Press the reset button for 5 seconds.

Serial port connection: Please use connector(1.2.17.12.0011) and weld it on the package of the serial port.

HFW3241E



Reset: Press the reset button for 5 seconds.

Serial port connection: Please use connector(1.2.17.12.0011) and weld it on the package of the serial port.

HDBW3241E



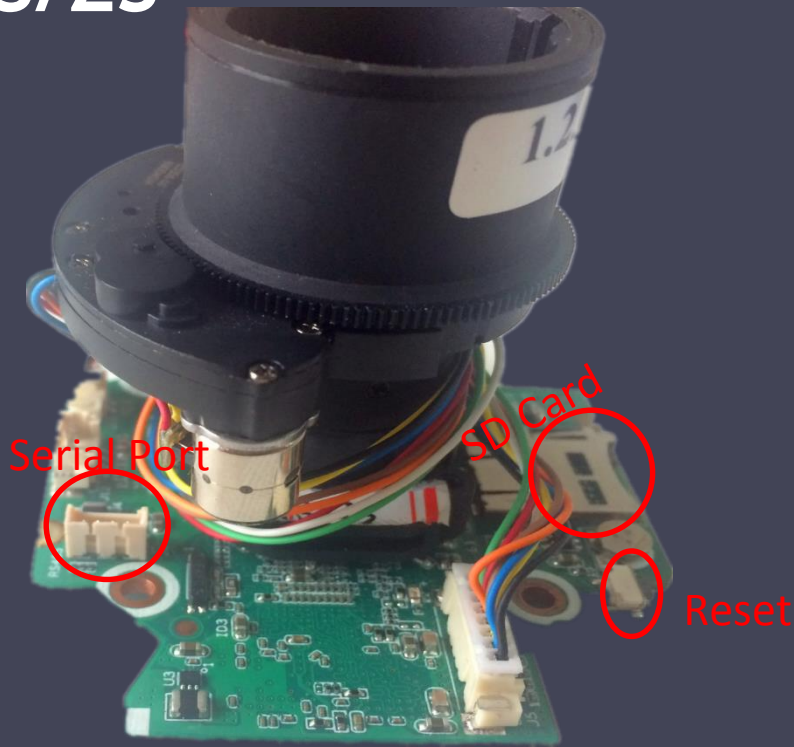
Reset: Press the reset button for 5 seconds.

Serial port connection: Please use connector(1.2.17.12.0011) and weld it on the package of the serial port.

IPC 2 Series



HFW2230/2320/2221/2121R- VFS/ZS



Reset: Press the reset button for 5 seconds.

Serial port connection: Please use connector(1.2.17.12.0011) and weld it on the package of the serial port.

HFW2231/2431R-VFS/ZS



Reset: Press the reset button for 5 seconds.

Serial port connection: Please use connector(1.2.17.12.0011) and weld it on the package of the serial port.

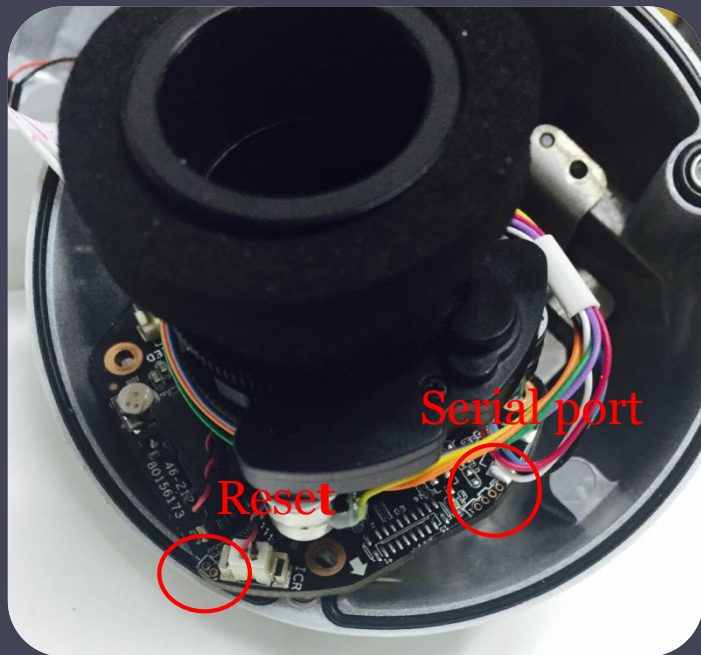
HDBW2431/2231/2230/2320/2221/ 2121R-VFS/ZS



Reset: Press the reset button for 5 seconds.

Serial port connection: Please use connector(1.2.17.12.0011) and weld it on the package of the serial port.

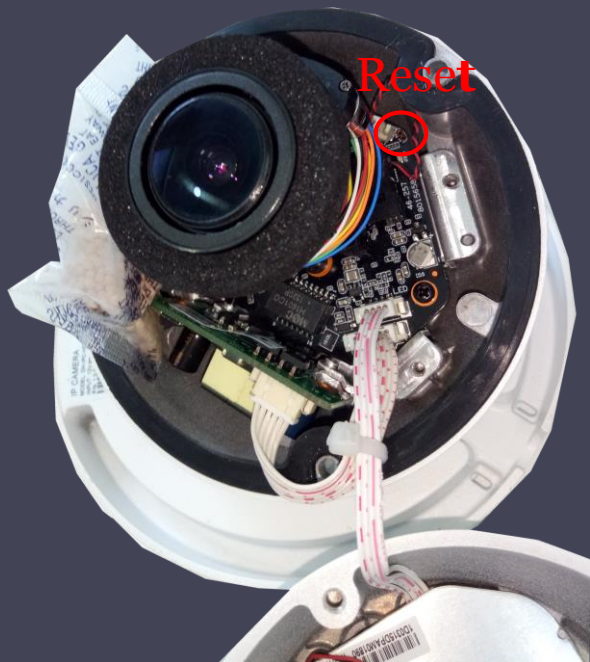
HDW2320/2221/2121R-Z



Reset: Make short circuit between two small holes on the PCB for 5 seconds.

Serial port connection: Please use connector(1.2.17.12.0011) and weld it on the package of the serial port.

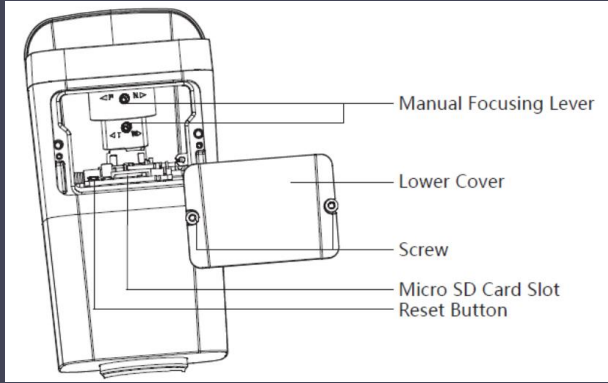
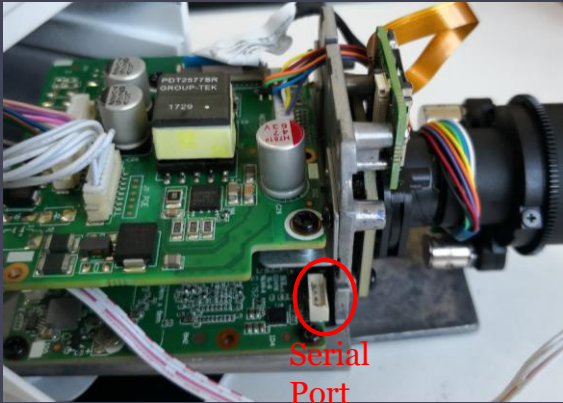
HDW2230/2231/2431R-ZS/VFS



Reset: Make short circuit between two small holes on the PCB for 5 seconds.

Serial port connection: Please use connector(1.2.17.12.0011) and weld it on the package of the serial port.

HFW2231/2431/2531/2831T



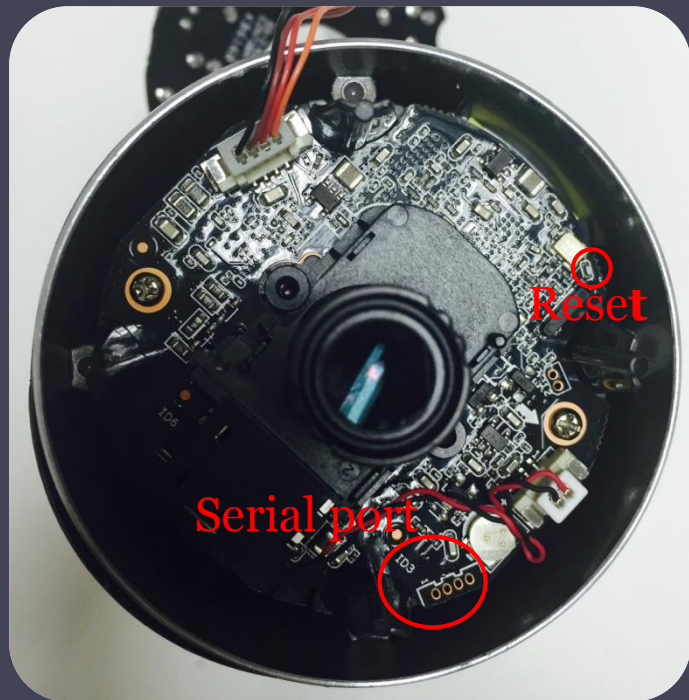
Reset: Press the reset button for 5 seconds.

Serial port connection: Please use connector(1.2.17.12.0011) and weld it on the package of the serial port.

IPC 1 Series

A nighttime cityscape featuring a prominent skyscraper with a red-lit, conical top. The sky is a deep blue, and other buildings in the background are dimly lit with some lights visible.

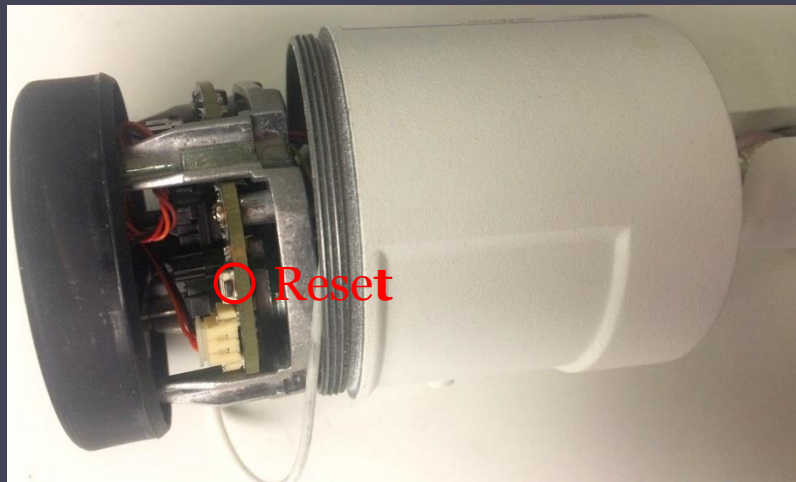
HFW1320/1220/1120/1020S



Reset: Press the reset button for 5 seconds.

Serial port connection: Please use connector(1.2.17.12.0011) and weld it on the package of the serial port.

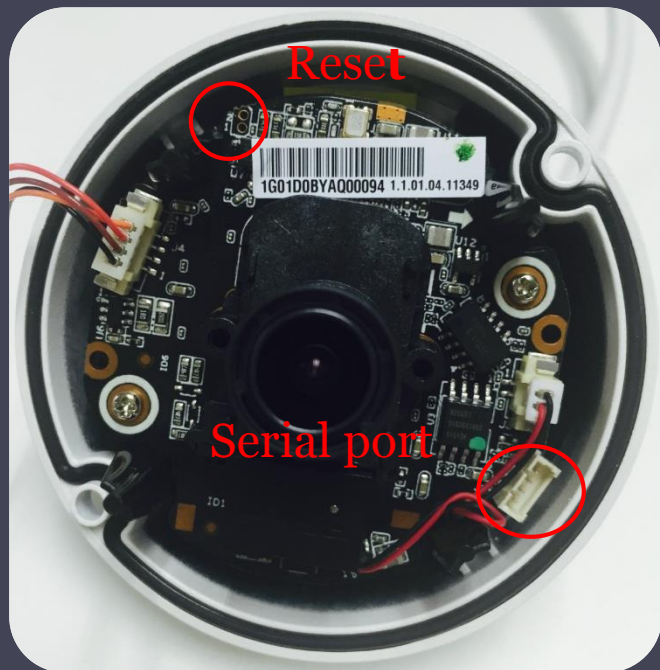
HFW1431/1230S



Reset: Press the reset button for 5 seconds.

Serial port connection: Please use connector(1.2.17.12.0011) and weld it on the package of the serial port.

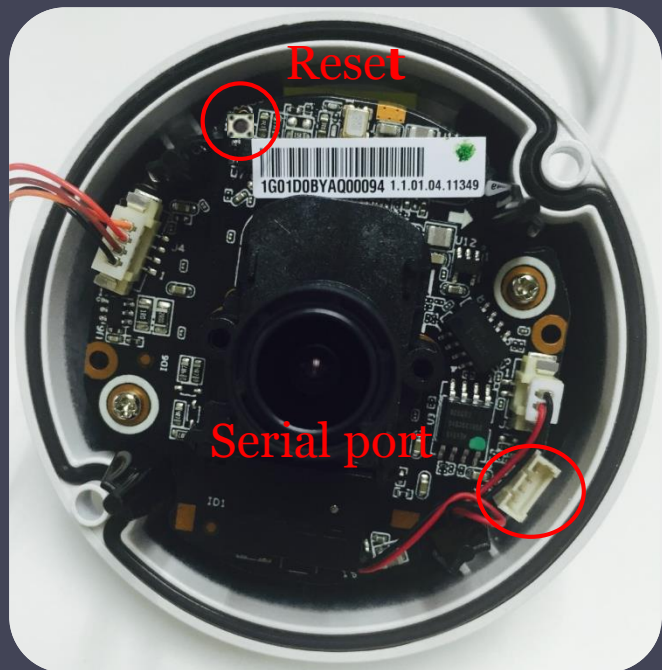
HDW1320/1220/1120/1020S



Reset: Make short circuit between two small holes on the PCB for 5 seconds.

Serial port connection: Please use connector(1.2.17.12.0011) and weld it on the package of the serial port.

HDW1431/1230S

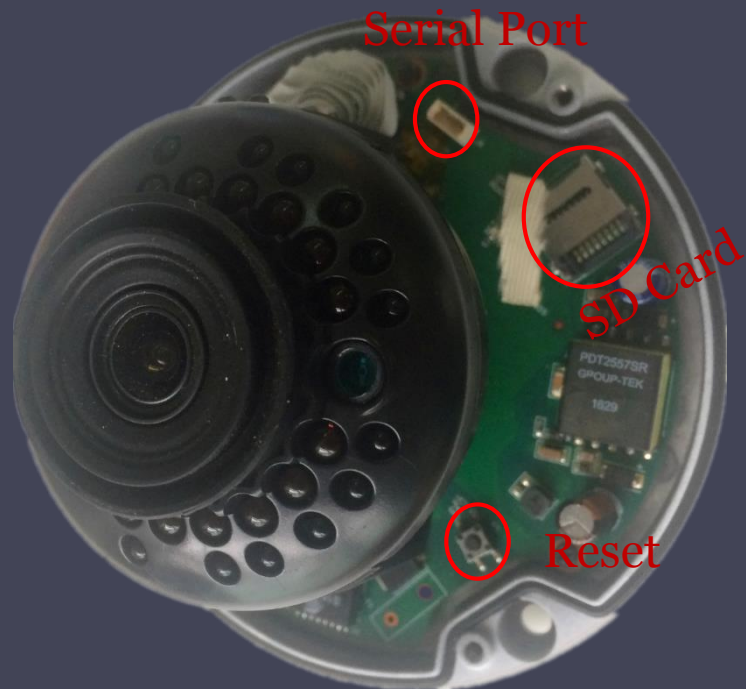


Reset: Make short circuit between two small holes on the PCB for 5 seconds.

Serial port connection: Please use connector(1.2.17.12.0011) and weld it on the package of the serial port.



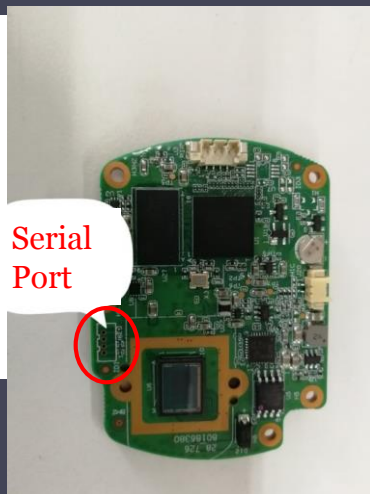
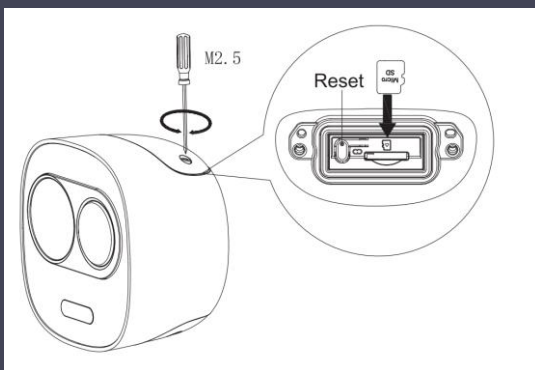
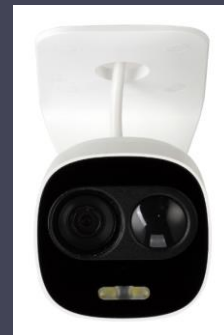
HDBW1230E (-S) /1431E (-S) /1320E



Reset: Press the reset button for 5 seconds.

Serial port connection: Please use connector(1.2.17.12.0011) and weld it on the package of the serial port.

HFW1831C-PIR

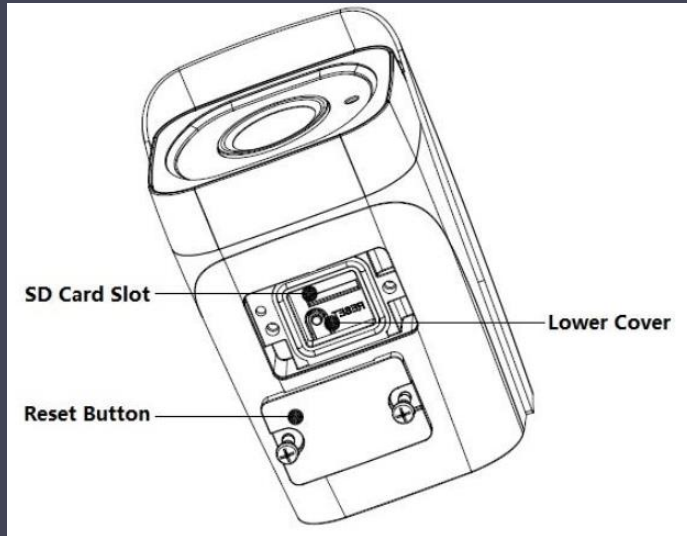


Serial
Port

Reset: Press the reset button for 5 seconds.

Serial port connection: Please use connector(1.2.17.12.0011) and weld it on the package of the serial port.

HFW1831E



Reset: Press the reset button for 5 seconds.

Serial port connection: Please use connector(1.2.17.12.0011) and weld it on the package of the serial port.

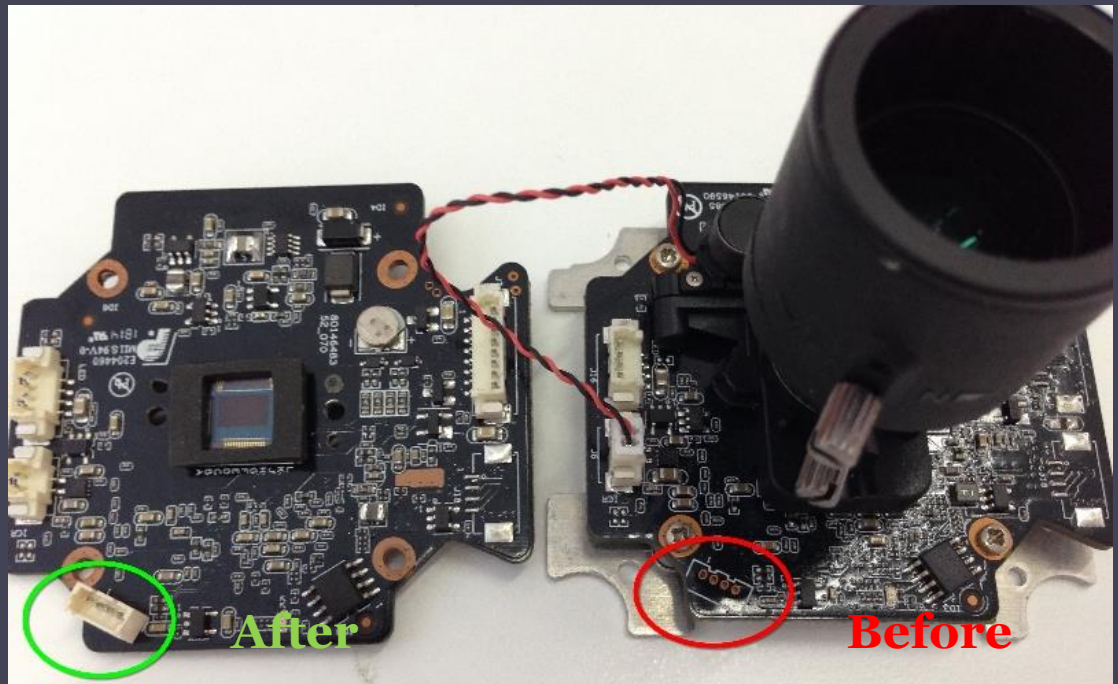
1. Find a connector

Material number: 1.2.17.12.0011

2. Weld it on the package of the serial port

Pay attention that the two gaps on the lateral of the connector should aim the two pits on the package silk print of the PCB.

3. Insert a serial line on the connector





THANKS!

www.dahuatech.com